

Single lift cylinder for
easy maintenance

Enclosed fork tips

Fast lift as standard
(up to 120 kg)



AMX 10/10e

Scissor lift hand pallet truck (1,000 kg)

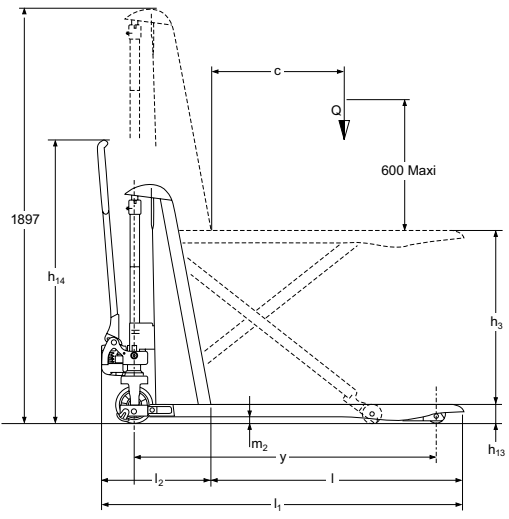
The truck can be used as a hand pallet truck as well as a lift platform, supply table and workbench:

- Steering wheels: Ø 170 mm with a choice of nylon, rubber or polyurethane tyres.
- Load rollers: Ø 82 mm with a choice of nylon or polyurethane tyres.
- Lift height: Up to 800 mm, with additional support legs for stability.
- Lifting and lowering: Manual or electro-hydraulic with 0.5 kW lift motor.
- Forks: Robust, torsion-resistant construction with closed fork tips.
- Battery (only for AMX 10e): 70 Ah C5, maintenance-free.
- AMX 10 with manual hydraulics: The load can be brought to the optimum work height with just a few movements of the tiller. Beyond a certain fork height, the scissor lift forklift truck is stabilised by additional support legs.
- AMX 10e with electro hydraulics: For frequent changes of working heights, the scissor lift truck with electric motor is recommended. The work height can be easily adjusted at the touch of a button.

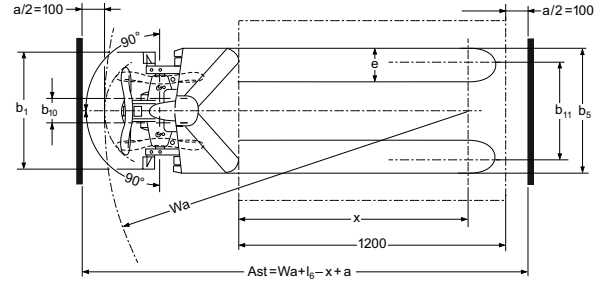
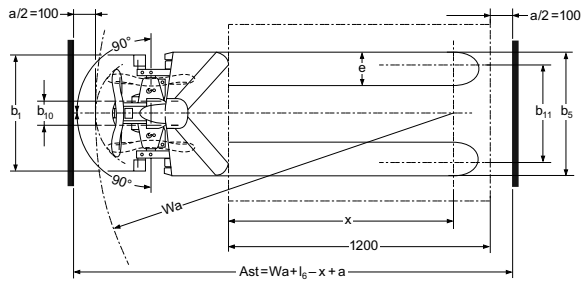
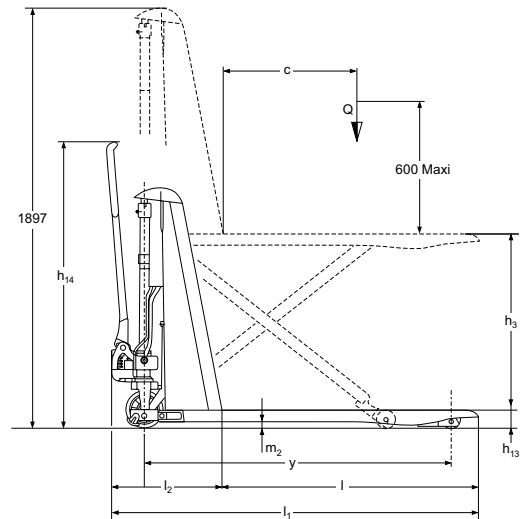
 **JUNGHEINRICH**

AMX 10/10e

AMX 10



AMX 10e



Technical data in line with VDI 2198

| | | | | Jungheinrich | | |
|------------------|----------------|--|-------------------------|---------------------------------------|--------------------|-----|
| Identification | 1.1 | Manufacturer (abbreviation) | | AMX 10 | | |
| | 1.2 | Model | | AMX 10e | | |
| | 1.3 | Drive | | manual | Electric | |
| | 1.4 | Manual, pedestrian, stand-on, seated, order picker operation | | hand | hand ³⁾ | |
| | 1.5 | Load capacity/rated load | Q | t | 1 | |
| | 1.6 | Load centre distance | c | mm | 600 | |
| | 1.8 | Load distance | x | mm | 1,030 | |
| | 1.9 | Wheelbase | y | mm | 1,383 | |
| | Weights | 2.1 | Net weight | | 157 | 195 |
| 2.2 | | Axle loading, laden front/rear | | 406 / 751 | 443 / 752 | |
| 2.3 | | Axle loading, unladen front/rear | | 101 / 56 | 136 / 59 | |
| Wheels / frame | 3.1 | Tyres | | N,C,V | | |
| | 3.2 | Tyre size, front | | Ø 170 x 50 | | |
| | 3.3 | Tyre size, rear | | Ø 82 x 62 | | |
| | 3.4 | Additional wheels (dimensions) | | Ø 82 x 62 ⁴⁾ | | |
| | 3.5 | Wheels, number front/rear (x = driven wheels) | | 2/2 | | |
| | 3.6 | Tread width, front | b ₁₀ | mm | 109 | |
| | 3.7 | Tread width, rear | b ₁₁ | mm | 440 | |
| Basic dimensions | 4.4 | Lift | | h ₃ mm 714 | | |
| | 4.5 | Extended mast height | | h ₄ mm 1,897 | | |
| | 4.9 | Height of tiller in drive position min. / max. | | h ₁₄ mm 1,299 | | |
| | 4.15 | Height, lowered | | h ₁₃ mm 86 | | |
| | 4.19 | Overall length | | l ₁ mm 1,650 | | |
| | 4.20 | Length to face of forks | | l ₂ mm 500 | | |
| | 4.21 | Overall width | | b ₁ /b ₂ mm 560 | | |
| | 4.22 | Fork dimensions | | s/e/l mm 53 / 150 / 1,150 | | |
| | 4.25 | Width across forks | | b ₅ mm 560 ¹⁾ | | |
| | 4.32 | Ground clearance, centre of wheelbase | | m ₂ mm 30 | | |
| | 4.34 | Aisle width for pallets 800 x 1200 lengthways | | Ast mm 2,005 | | |
| 4.35 | Turning radius | | W _a mm 1,635 | | | |
| Performance data | 5.2 | Lift speed, laden/unladen | | m/s 0.03 / 0.05 | | |
| | 5.3 | Lowering speed, laden/unladen | | m/s 0.11 / 0.04 0.13 / 0.05 | | |
| Electrics | 6.2 | Lift motor, output at S3 15% | | kW 0.0 0.5 | | |
| | 6.3 | Battery as per DIN 43531/35/36 A, B, C, no | | maintenance-free ²⁾ | | |
| | 6.4 | Battery voltage/nominal capacity K5 | | V/Ah 12 / 70 | | |
| | 6.5 | Battery weight | | kg 0 24 | | |

¹⁾ 680 mm also possible

²⁾ Built-in charger

³⁾ Electric and manual lift

⁴⁾ Lateral support rollers

Benefit from the advantages



Easy handling

Easy to operate controls are suitable for both left and right-handed operators. The special lowering valve enables loads to be lowered precisely.

Lift height reduces strain on the back

Jobs which involve a great deal of bending and heavy lifting can soon have a detrimental effect on health. The work height of the AMX 10 / AMX 10e can be varied by a height of up to 800 mm. This

ensures back strain is reduced during operation. The scissor lift hand pallet truck can also be equipped with lateral support rollers, so that travel is also possible in the raised position.

Effortless lifting and lowering

Lifting can be by either manual hydraulic lift (AMX 10) or electro-hydraulic lift (AMX 10e) with a 0.5 kW lift motor. The pump unit has an integrated reservoir.

The lowering valve in the pump unit facilitates precise lowering via hand lever. The hydraulic system is protected against overloading by a pressure relief valve.

Battery and charger (AMX 10e)

A built-in electronic charging rectifier is fitted as standard. The maintenance-free battery (70 Ah) can be charged at any standard 230-V socket. The charger automatically switches off when the charging process is completed.

Jungheinrich South Africa (Pty) Ltd

55 Lake Road
Long Meadow Business Estate North
Edenvale 1609
PO Box 1624
Rivonia 2128
info@jungheinrich.co.za
www.jungheinrich.co.za
Tel: (+27) 010 596 84 60

The German production facilities in Norderstedt, Moosburg and Landsberg are certified.

ISO 9001
ISO 14001

Jungheinrich fork lift trucks meet European safety requirements.



JUNGHEINRICH